



**Les Twarog**

Breaking News: Check out the most popular Real Estate Website in the Lower Mainland

**NOW WITH SOLD HISTORY**  
[www.BCCondosandhomes.com](http://www.BCCondosandhomes.com)

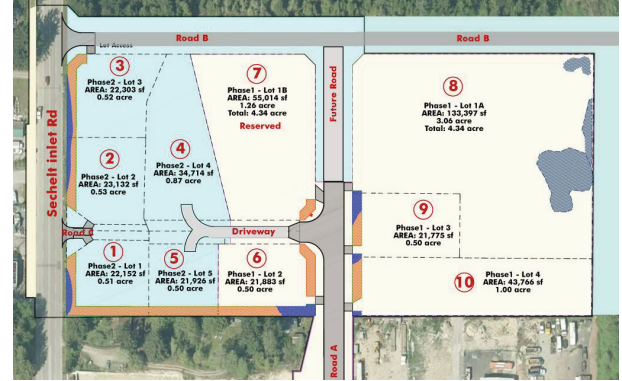
## SECHELT INDUSTRIAL LAND - 9A

**5980 Sechelt Inlet Road | \$11,000,000**

Approved site with 9 Acres, 9 Lots (Pending Subdivision)  
 Zoned I-6. One of the last industrial properties on the market in Sechelt. Located 2 km north of town.

Lots 7 & 8 are currently running "Big Foot Storage" with \$21k/mo. income and growing. Seller will consider a \$6M Vendor Take Back Mortgage

More info: [www.bigfootstoragesechelt.com](http://www.bigfootstoragesechelt.com)



### 266 Steven (West Vancouver)

0.53 Acres (23,124sf) | Land | Shovel Ready  
 8,500sf home possible

**\$5,100,000**



### 2002-1082 Seymour (Downtown)

708 sqft | Sub P/4 | 1 Bed + Den  
 HDW Floors | Open Concept

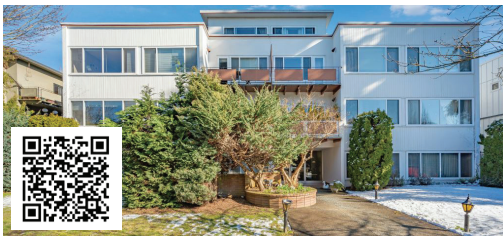
**\$699,000**



### 2105-1483 Homer (Yaletown)

1340 sqft | 3 Bed | 2 Bath  
 Semi Waterfront Unit at Waterford

**\$2,500,000**



### 5850 Vine (Kerrisdale)

22 Unit Apartment Building  
 Good Shape, Future Potential

**\$11,900,000**



### Marpole Apartment Building

26 Unit, 12 Have Been Remodelled,  
 Income 32k/mo, Potential 40k/mo

**\$11,900,000**



### 1080 Wolfe (Shaughnessy)

600 sqft House | 26,000 sqft Lot  
 With Plans to Add Another 9000sqft

**\$11,000,000**



### 1st SHAUGHNESSY BUILDING SITE

1 Acre | 45,000 sqft Lot - POT M/F  
 Property has 2 Heritage Homes - Pre 1940

**\$15,000,000**



### 1st SHAUGHNESSY BUILDING SITE

26,000 sqft Lot | 2 Lots  
 Property has 1 Heritage Home

**\$12,000,000**



### NORTH MISSION BUILDING SITE

43 Acres | 16 Residential Lots  
 Seux and Sylvester in Durieu

**\$9,500,000**